

# Geologic Map of the Leon Property, Sonora, Mexico

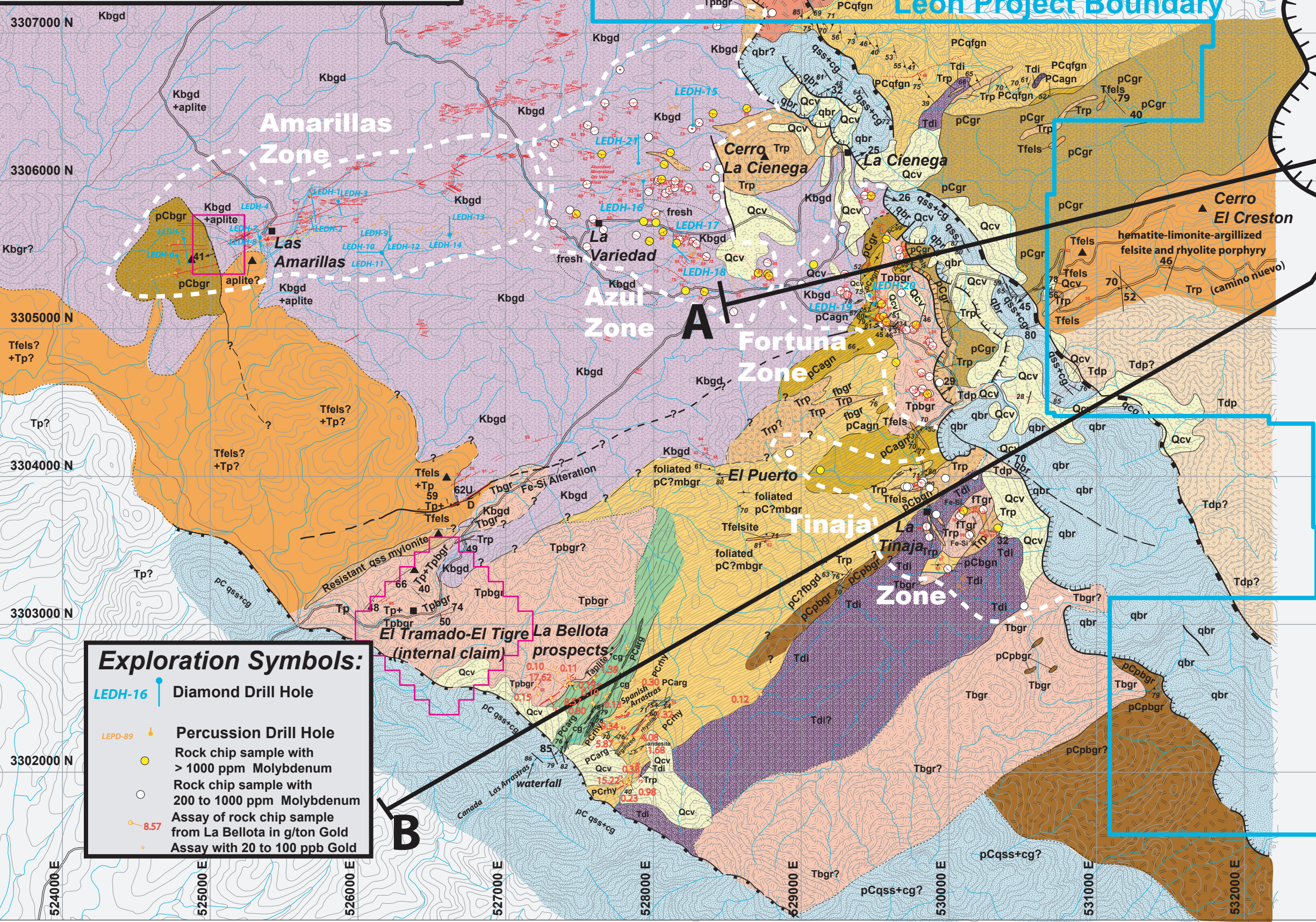
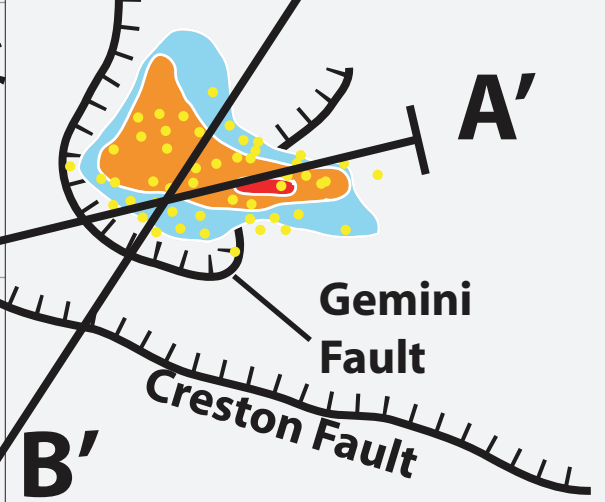
Mapping and sampling by Jon Nourse, Roberto Rivera, and Paul Stubbe: August, 2006-April, 2010

- Map Symbols:**
- dirt road
  - arroyo or drainage
  - hilltop or mountain peak
  - ranch
  - normal fault, hachures on hanging wall
  - fault, showing dip
  - mineralized quartz vein, showing dip
  - strike/dip of bedding in quartz sandstone unit
  - strike/dip of foliation in Precambrian gneiss; lineation trend
  - topographic contour
  - lithologic contact
  - photointerpreted or approximate contact
  - detachment fault (low-angle normal fault), showing dip; hachures on hanging wall
  - strike-slip fault

Leon Project Boundary:  
2 km north

Scale in Kilometers  
Leon Project Boundary

El Creston Molybdenum Ore Body



**Rock Units:**

Qcv	Quaternary colluvium or debris flow
Tbgr or Tpbgr	Tertiary medium grained or porphyritic leucocratic biotite monzogranite
Tfels	fine grained Tertiary felsite of aplite
Tdp	Tertiary dacite porphyry
Trp or Tp	Tertiary rhyolite porphyry or undifferentiated porphyry
Tdi	fine-grained Tertiary(?) or Cretaceous(?) diorite
Kbgd	Late Cretaceous medium-grained equigranular biotite+/-hornblende granodiorite
qss+cg; qbr	Upper Precambrian El Tapiro Formation of Stewart (2002): quartzose sandstone and granule-pebble conglomerate; quartzite breccia along detachments; qbr = brecciated
PCpbgr	megacrystic porphyritic biotite granite (1.4 Ga?)
PCagn	biotite-rich granite augen gneiss (1.68 Ga?)
PCgr	El Creston granite (1730 Ma): medium-grained, equigranular biotite granite w/conspicuous quartz grains
PCfbgd; PCmbgr	fine-grained foliated biotite granodiorite or granite medium-fine grained mylonitic biotite granite
PCarg; cg	fine-grained dark gray or green argillite, locally greenschist facies, with stretched-pebble conglomerate
PCrhy; PCqfgn	fine-grained lineated metarhyolite fine-grained quartzofeldspathic gneiss (metasandstone or felsic metavolcanic), locally med-grained schistose

- Exploration Symbols:**
- LEDH-16 Diamond Drill Hole
  - LEPD-89 Percussion Drill Hole
  - Rock chip sample with > 1000 ppm Molybdenum
  - Rock chip sample with 200 to 1000 ppm Molybdenum
  - Assay of rock chip sample from La Bellota in g/ton Gold
  - Assay with 20 to 100 ppb Gold

Leon Project Boundary